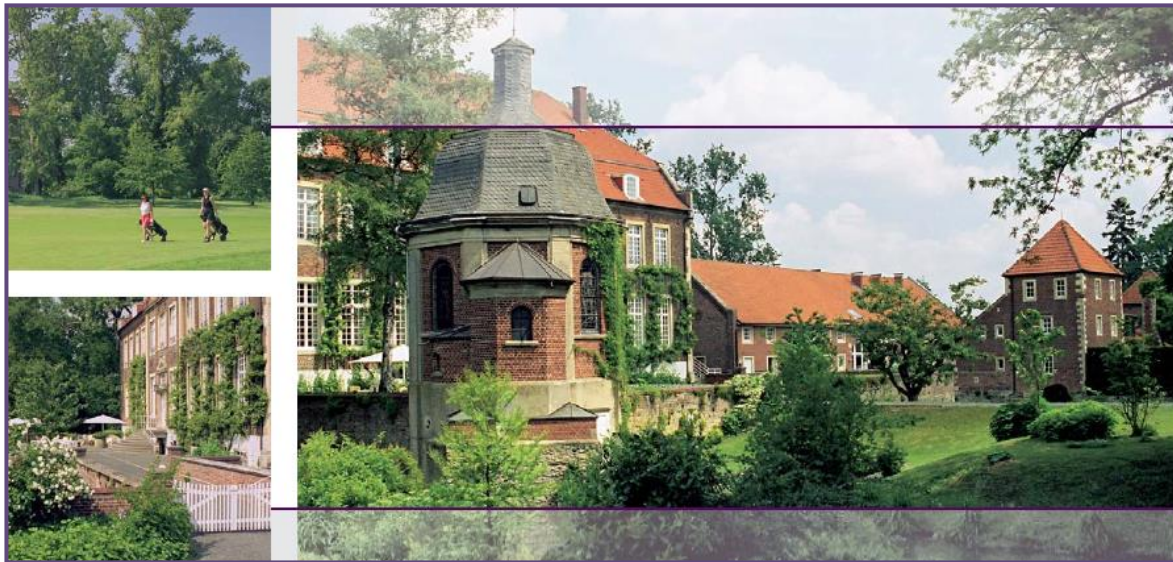




Restaurant Hotel
SCHLOSS WILKINGHEGE

„Memorable meetings and events“

The historic and timeless charm of our house provides a special framework for conferences, workshops and meetings



Hotel Schloss Wilkinghege
Steinfurter Str. 374 | 48159 Münster
Tel.: 0251-144270 | info@schloss-wilkinghege.de
www.schloss-wilkinghege.de



Restaurant Hotel

SCHLOSS WILKINGHEGE

„ Exclusive setting on the outskirts of Münster“

Without overnight stay

Variant I

- 1 Coffee break in the morning with coffee/tea and snack
Lunch (2-course menu or buffet lunch*)
- 1 Coffee break in the afternoon with coffee/tea and snack

€ 56,50 per person

With overnight stay

Variant II

- 1 Overnight stay in a single room
rich buffet breakfast
- 1 Coffee break in the morning with coffee/tea and snack
Lunch (2-course menu or buffet lunch*)
- 1 Coffee break in the afternoon with coffee/tea and snack
Dinner (3-course menu)

€ 216,00 in a single room

€ 236,00 in a double room for single use

€ 266,00 in a suite for single use

* We offer a buffet lunch from 15 persons and above.

Persons accompanying in a double room/suite with overnight stay and breakfast pay an extra charge of € 40,00.



Restaurant Hotel

SCHLOSS WILKINGHEGE

Additional extras:

- Breakfast snack € 15,50
(2/2 Sandwiches, yoghurt, fruit, fruit juice and coffee/tea)
- Welcome coffee with biscuits € 5,50
- Extra coffee break with coffee/tea and snack € 9,00
- Extra lunch (2-course or buffet lunch) € 38,50
- Extra dinner (3-course) € 49,50
per person/day
- For a more festive dinner it is possible to add another course at an extra charge.
For a more exclusive dinner please see our seasonal menu suggestions

Our conference rooms we offer from 4 people

The drinks in the meeting room (outside the coffee break) as well as those taken during each meal will be charged according to consumption:

- Soft drinks 0,2 ltr. € 3,00
- Bottle of mineral water 0,75 ltr. € 6,70
- Cup of coffee € 2,40
- Espresso € 3,10
- Cappuccino € 3,70
- Beer on tap (Stauder) 0,25 ltr. € 3,50

Or in line with a **beverages all-inclusive charge for softdrinks in the conference room (Mineral Water/Apple juice)** € 13,50
per person/day



Restaurant Hotel

SCHLOSS WILKINGHEGE

Room- and size overview

Room	Size	Rows of chairs	U-Form (outside seating)	Parliamentary seating	Block seating
Rittersaal	95 m ²	100	25 außen	25	32
Ab 15 Personen			30 innen und außen		
Kaminzimmer	50 m ²	40	15	-	22
Ab 6 Personen					
Salon I	16 m ²	-	-	-	oval 6
Ab 4 Personen					
Salon II	30 m ²	-	-	-	oval 6
Ab 4 Personen					

Room rental per day	
Rittersaal	€ 950,00
Kaminzimmer	€ 600,00
Salon I	€ 250,00
Salon II	€ 250,00

If the room is used on the following day until noon (1 p.m.), only 50% of the above rent will be charged

Our heritage function rooms include:

- Large windows with natural daylight
- Individual controllable lighting
- Rooms can be dimmed
- Wood flooring
- Free Wifi

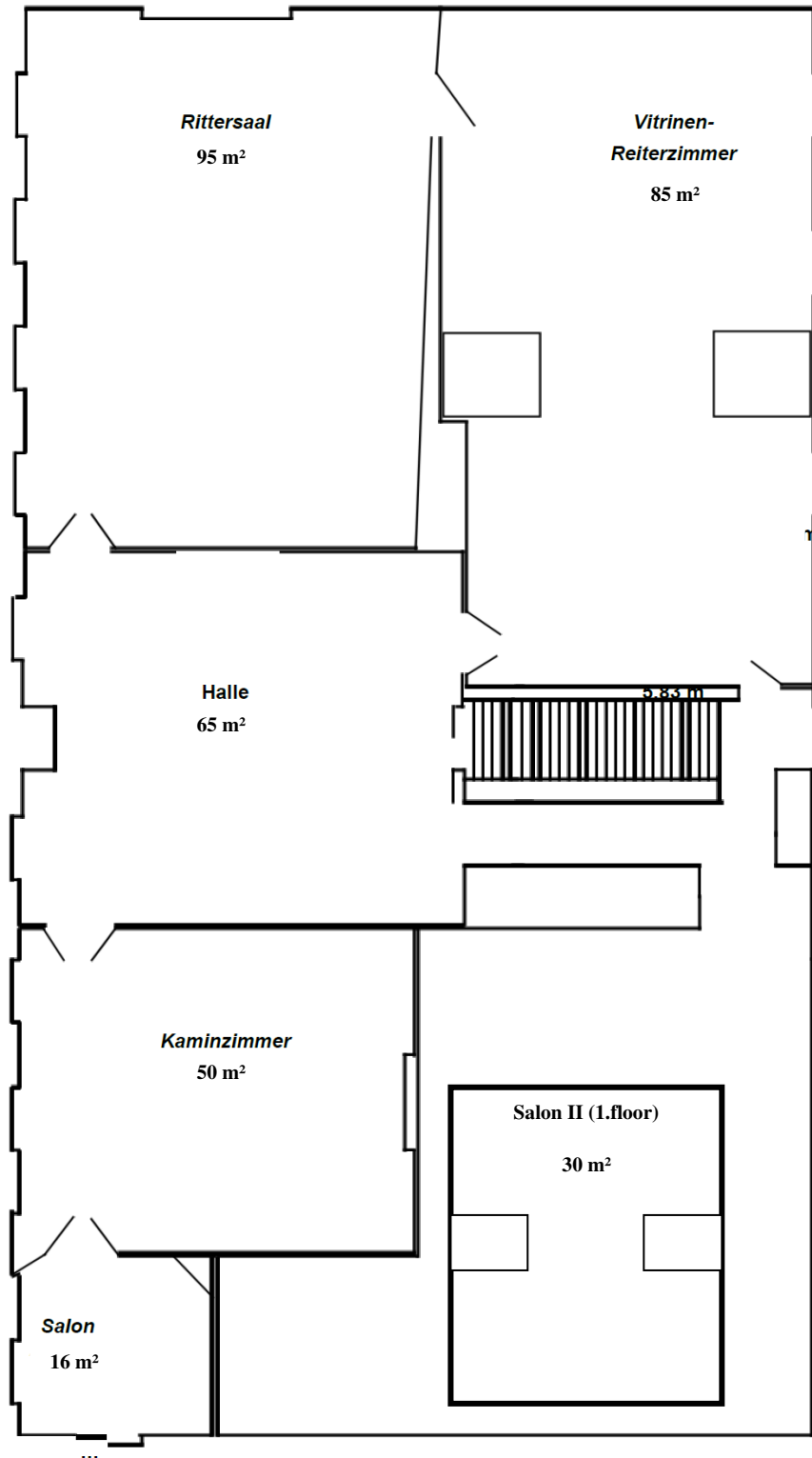


Restaurant Hotel

SCHLOSS WILKINGHEGE

„Our elegantly appointed rooms with high ceilings and crystal chandeliers are the perfect setting for representative meetings and events.“

Ground view





Restaurant Hotel

SCHLOSS WILKINGHEGE

Technique

- Flip chart
- Pin board
- Screen
- Presenters case
- Speaker's desk
- Beamer / Beamer table
- Pens & blocks

The above-named equipment is including.

For further technology please contact Tridis Multimedia GmbH:

Tridis Multimedia GmbH | Scharnhorststraße 99 | 48151 Münster | 0251 534405

Wifi usage is available in every room.

Please let us know which equipment is required and the seating order
3 days before your meeting starts.

Short-term changes during the day are logistically not possible



Restaurant Hotel

SCHLOSS WILKINGHEGE

The hotel

First mentioned in 1311, Schloss Wilkinghege was once one of many stately homes belonging to the “von Rehmen zu Barenfeld” family. Rich in history the castle was turned into a hotel with restaurant in 1955.

Hotel Schloss Wilkinghege is situated in quiet and idyllic surroundings on the outskirts of the historic city of Münster. A perfect place, for guests to relax and enjoy the Westphalian countryside. As is typical for the castles in the Münster region, the entire property is surrounded by a moat. An 18-hole Golf course is situated directly behind the hotel.

To the front of the castle there is also a terrace which can ideally be used for receptions and dining during the summer months. This overlooks the well-kept park grounds with a plethora of birdlife seldom to be found elsewhere.

The hotel rooms

The 34 suites and rooms are situated in both the castle and the annex. The rooms which are individually decorated with exclusive furnishings reflect the castle atmosphere.

Single room/double room

Depending upon the category the rooms have either a French bed (1,40x2m) or a double bed, a small desk and seating area. The bathrooms are either with a shower or a bathtub.

Suites

The suites are spacious and have a separate living and sleeping area.

The bathrooms are at least 10m² and have exclusive fittings with a bathtub, a shower, two washbasins and a bidet.

The Maisonnette

In a turret opposite our annex this separate 55m² suite spans two floors with wonderful views of the park and moat. The bedroom and bathroom are both on the ground floor. The living room on the first floor can be reached via an oak staircase. The old oak flooring combined with exclusive materials from the British designer Tricia Guild make this a very special suite to relax and enjoy any stay.



Restaurant Hotel

SCHLOSS WILKINGHEGE

The luxury suite in the castle

Situated in the main building the "Von Rhemen" suite spanning on average 60 m² demonstrates the exquisite harmony of German heritage and modern refinement. The spacious living and sleeping room with its large windows offers majestic views overlooking the golf course. Bespoke furnishings made from the finest materials and beautiful antiques as well as a large walk-in wardrobe complements this room.

The expansive bathroom measuring ca. 25 m² has fittings from the designer Philippe Starck. The whirlpool bath as well as the round shower makes every stay into something very special.



Roomrates for single use

Number

Single room – small (bed 100x200)	80,00 €	3
Single room	110,00 €	5
Double room	130,00 €	14
Suite	160,00 €	10
Luxury Suite „Von Rhemen“	290,00 €	1
Maisonnette Suite (Tower room)	260,00 €	<u>1</u>
	Gesamt	34

Persons accomanying in a double room/suite with overnight stay and breakfast pay an extra charge of € 40,00.

From 25 rooms we offer the single and double rooms / suites at the special price of 110.00 € (single use).

The prices are per room / night including a rich breakfast buffet, free parking and WiFi use, plus 4.5% accommodation tax

There is no accommodation tax for a business stay.





Restaurant Hotel

SCHLOSS WILKINGHEGE

Framework program & leisure activities

"Pättkestouren"/cycling

Münster has one of the best networks of bicycle paths in Germany. Enjoy a tour over Münsters promenade, a 4,5 km path going around the city. Alternatively cycle on the various signposted paths leading you from one moated castle to another.

Some tour suggestions, e.g. from Burg Hülshoff to Haus Rüschaus, are at the reception at your disposal. Bicycles can be rented for € 10,00 per day / bike (must be ordered in advance).

Golf

Directly behind the castle, you will find one of the best 18-hole golf courses in the region. Please contact the Golf Club Wilkinghege directly to obtain information regarding the handicap which is needed, golf courses as well as tea off times.

Hotel guest receive a green fee discount at the following golf clubs with which we cooperate with:

Golfclub Münster-Wilkinghege e.V.

0251-214090

Golfclub Münster Tinnen e.V.

02536-330100

Golfclub Aldrufer Heide e.V.

02571-97 095

Please call the clubs office to negotiate tee off times. The fees are to be paid directly at the respective golf club.

Pedal boating or a sailing trip on the Aasee

Münster's most central recreational area is the Aasee (a large manmade lake). It is only a 15-minute walk from the Prinzipalmarkt and offers a whole range of interesting leisure activities.

A boat rental, a sailing school and two sailing clubs invite you to explore the Aasee.

Enjoy a wonderful walk taking the picturesque path which goes around the lake.

Guided Tours:

The Night watchman tour

An entertaining time journey in the lantern light through Münster. Let yourself be initiated into a good part of the past history of the old Hansestadt Münster.

More information and bookings at StattReisen Münster Tel 0251-4140333

Segway Sightseeingtour

A unique experience is offered by a trip through Münster on a Segway taking you over the promenade, past the Aasee and castle and of course through the old town.

More information and bookings at Stadtlupe Münster Tel 0251-59068760



Restaurant Hotel
SCHLOSS WILKINGHEGE

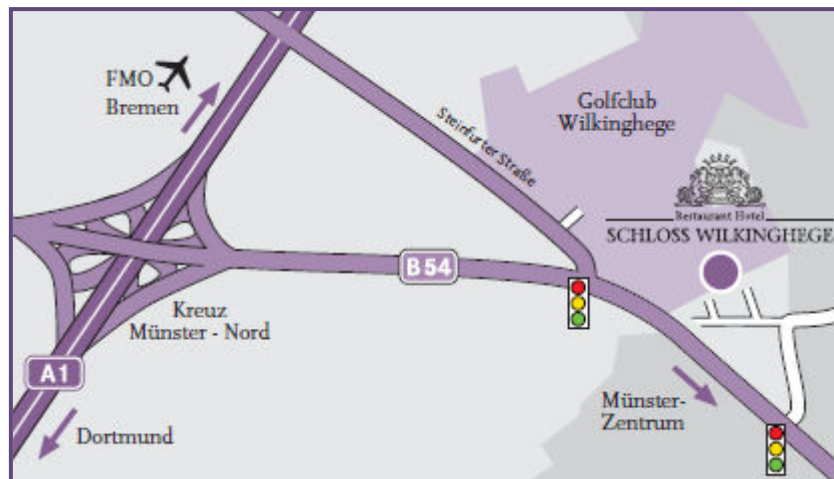
„Easily accessible set in the heart of westfalian landscape“

Location

Schloss Wilkinghege is **4,5 km away from the historic city centre** and **6 km from the central train station**.

Both are accessible with a direct bus line (every 20 min).

The motorway (exit Münster Nord) is only 2 km and the airport FMO (Münster-Osnabrück) only 25 km away.



Directions

Please enter the following in your satnav: street = Wilkinghege 41

From A 43: Exit “Münster-Süd” onto the A1 northbound in the direction of Bremen.

From A 1: Take the exit “Münster-Nord” and follow the signs “Münster-Zentrum”. At the second traffic lights after the exit turn left. After 200 metres turn left again. Then you are on the private road of Schloss Wilkinghege.

Free parking lot at the hotel

By plane: Münster/Osnabrück (25 km), Düsseldorf (120 km), Köln (160 km).